

Please post this document in a conspicuous location for all employees to read.

As part of the Company's on-going efforts to prevent accidents and reduce injuries to employees, Clean Harbors will periodically communicate to employees' brief case studies of incidents involving Clean Harbors and Non-Clean Harbors personnel who have been involved in incidents resulting in injuries or near injuries. The purpose for this program will be to learn from the experience of others who have been involved in incidents or near misses and to implement corrective and preventative measures to protect our employees from being involved in similar incidents.



Mulcher Fire - CMI Hurricane

On January 11, 2018 on a project in northern Alberta a CMI Hurricane caught on fire. Although the fire was extinguished, the mulcher sustained significant damage. The firefighting efforts and extent of the damage made it extremely difficult to determine the actual cause of the fire.

There have been some reports of the cab/chassis wiring connector plug overheating in these units. An inspection of the plug proved that the connector had not been hot and was not the cause of the fire. No quantifiable evidence exists that would support the connector has ever been the cause of a fire.

The investigation came to the conclusion that the highest probability of the source of the fire was a short circuit in the electrical wiring harness in the vicinity of the engine bell housing. An inspection of the battery cables and wiring harness should be completed to ensure that no chafing of the wiring has occurred.

The following pictures from the same make and model showing the area it is believed the fire started.



Fire damage under cab

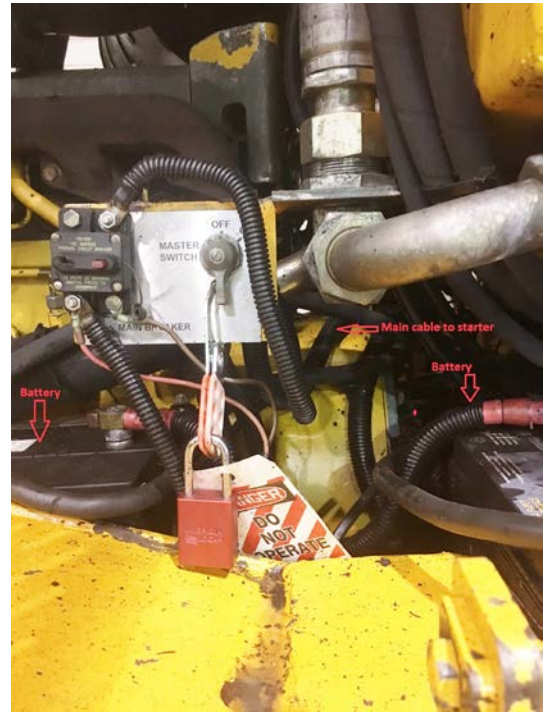


Cab connector plug from unit involved in fire

Exploration Devices y Alert



Battery cable location in relation to the engine bellhousing



Location of batteries and main cable to starter motor